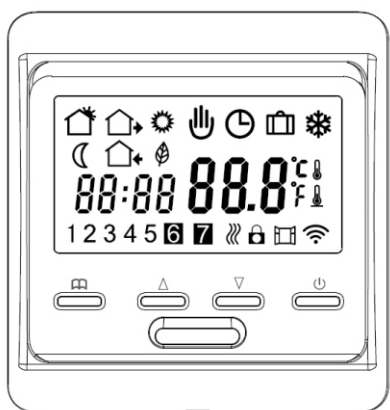


T510 is classic design flush-mounting digital programming WIFI thermostats equipment with large LCD screen. It is used for electric, water, boiler heating. Carefully study this manual and make sure it is installed by qualified electrician.

Parameter

- Voltage: 220V/230V
- Power consumption: T510 WIFI:2W
- Setting range: 5-40°C
- Temp deviation: 0.5,1,2,3
- WIFI type: 2.4Ghz
- Protective range: IP21
- Material: Anti-flammable ABS+PC
- Sensor: Built-in sensor, floor sensor

Symbols on display



	Comfort mode		Eco Mode
	Program mode		Holiday Mode
	Anti-freeze function		Temporary mode
	Time	1 2 3 4 5 6 7	Days
	Period time		Temperature
	Heat		Lock
	Open window		WIFI

User Operation

1. On/off: Press key to turn on, Press again to off
2. Lock: on main screen, press key 3 second to lock, press 3 second again to unlock
3. Floor temperature check: on main screen, Press 3 second to check floor temperature at air sensor mode
4. Mode: On main screen, press key to choose mode program-comfort-eco-holiday mode

At Comfort mode: press or to set temperature, need not to confirm, thermostats will always operate under set-temperature. Default 23°C , max 35°C

At eco mode: press or to set temperature, need not to confirm, thermostats will always operate under set-temperature. Default 18°C , max 35°C

At program mode: thermostat will operate under standard program indicated in settings F2.

Temporary mode: at program mode, press or to set temperature, thermostats enter into temporary mode, thermostats will operate under set-temperature until next heating period.

At holiday mode: press or to set temperature, need not to

confirm, thermostats will operate under set-temperature according to days set in advanced setting F4. Default 10°C , max 20°C.

Setting

Press for to turn off thermostat, press to go F1. use and to select F1, F2, F3, F4, F5

Item	Setting	Explanation
F1	Date & Time set	Modify date, time
F2	Program	Modify time, temperature of 4 program period
F3	Read operation time	Read working time per day, month, year
F4	Advanced setting	Modify advanced setting
F5	WIFI connection	000: No reset 001: Reset and WIFI in EZ mode 002: Reset and WIFI in Ap mode

F1: Date, Time Setting

Select F1, press to enter, press or to set day, hour, min, press to confirm. After finish setting, press to leave or thermostats will go back main screen 5 second late.

F2: Program

Select F2, press to enter, press or to select day & program period, press to enter, use or to set time and temperature, use to exit or thermostats will go back main screen 5 second late.

Standard program:

DAY				
Mon-Fri	WAKE 06:00 20°C	LEAVE 08:30 15°C	BACK 17:00 20°C	SLEEP 23:00 15°C
Sat-Sun	WAKE 06:00 20°C	LEAVE 08:30 20°C	BACK 17:00 20°C	SLEEP 23:00 15°C

F3: Read operated time

Select F3, press to enter,press or to see operation time per day, month, year.

Eg: 10:17 03 mean thermostat totally operate 3 days 10hours 17mins. Press to leave.

F4: Advanced setting

Note: Menu here should be modified by installer or qualified people. Select F4, press to enter, Use to select item, Use or to modify value. Press to leave

Item	Default Value	Range
01: Sensor Selection	01	01: Built-in& floor limit 02: built-in sensor 03: Floor sensor
02: Room temperature calibration	0°C	-5°C~5°C
03: Floor temperature calibration	0°C	-5°C~5°C
04: Floor. Limit	35°C	5°C~60°C
05: Schedule	5-1-1	5-1-1/7
06: Adaptive start	OFF	ON/OFF
07: Adaptive start time	20mins	0-40mins
08: Open window	OFF	ON/OFF

09: Sensor type	10K	3K/5K/6.8K/10K/12K 15K/20K/22K/33K/47K
10: Anti-freeze function	ON	ON/OFF
11: Holiday time	1 day	1-99 days
12: Temp deviation	1°C	0.5°C,1°C,2°C,3°C
13: Display Precision	0.5°C	0.5°C,0.1°C
14: Operation step	0.5°C	0.5°C,0.1°C,1°C
15: Reset	No	No/Yes
16: Display when thermostat OFF	02	01: Show OFF 02: Show Temperature 03: Nothing
17: Temperature unit	°C	°C/F
18: Thermostat state at power-on (after power-off)	01	01: Same to state before power off 02: Turn off thermostat 03: Turn on thermostat & work with mode before power drop

F5: WIFI connection

Step 1: Download and install Tuya app by scanning QR code or searching "Tuya Smart" in Google Play or App store. Login in or register a new account. Keep app login in.



Step 2: Add thermostats to Tuya smart app.

Make sure mobile phone connect to **2.4G** WIFI before adding thermostats. Thermostats is only available for 2.4G WIFI.

Automatic add method:

Turn on Bluetooth on phone. Login in Tuya app and click add button "+" on the right top corner. Wait a second and you will find thermostat is in list ready for add, Click add button to add again. Enter WIFI PIN, thermostats will add automatically.

If thermostat is not in list on app, turn off thermostats, press then use or to select F5, press to enter, use or to select 001, press to confirm. Wait a second, WIFI signal on main screen will flash quickly, Open Tuya app, click Add button "+" again.

Manual Add method:

At this stage,2 modes for choice: EZ mode and Ap mode

EZ mode: Select F5 on thermostats, enter and select 001, press to confirm. Wait a second, WIFI signal on main screen will flash quickly. Open Tuya app, click add button "+" →click small home appliance on left column→click thermostat (Wi-Fi) on right column→select WIFI & enter PIN, you will see thermostat is adding.

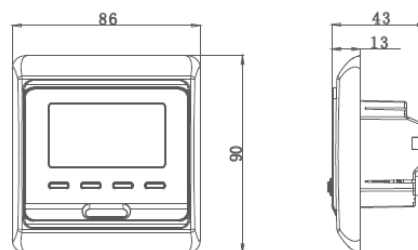
Ap mode: Select F5 on thermostats, enter and select 002, press to confirm. Wait a second, WIFI signal on main screen will flash slowly. Open Tuya app, click add button "+" →click small home appliance on left column→click thermostat (Wi-Fi) on right column→select WIFI & enter PIN→select ap mode on the right top corner and press for next→go to connect→find and connect WLAN named "Smartlife****" →you will see thermostat is adding.

Sensor Failure:

Er1: Built-in sensor short-circuited or disconnected.

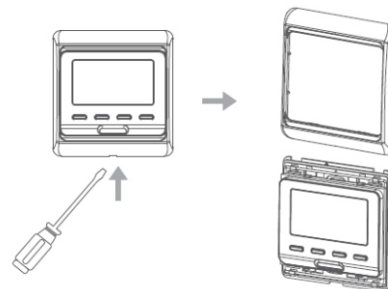
Er2: External sensor short-circuited or disconnected. When shows Er1/Er2 error, thermostat must be checked till the error is eliminated.

Dimension: mm

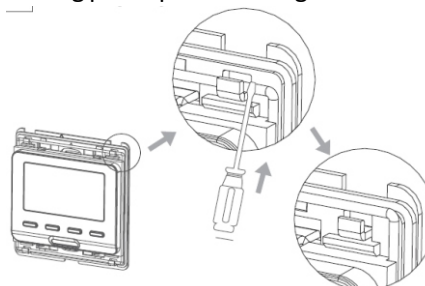


Mounting Steps.

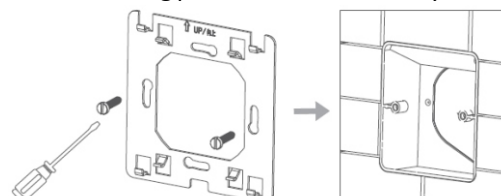
1. Release the front cover by inserting a screwdriver into bottom crack



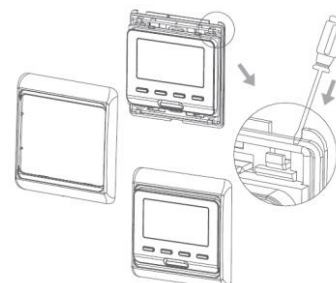
2. Take the backing plate apart according to the flowing diagram



3. Mounted the backing plate in the wall socket by screwdriver



4. After connect wires(see right diagram),the thermostats mount on backing plate and remounted the cover & frame.



Wiring Diagram:

Note: the thermostats should be only applied full load 3200W in 2500m height above sea level.

